



OAKFIELD



Seaside, Eastbourne  
£1,150 Per Calendar Month



## Seaside, Eastbourne

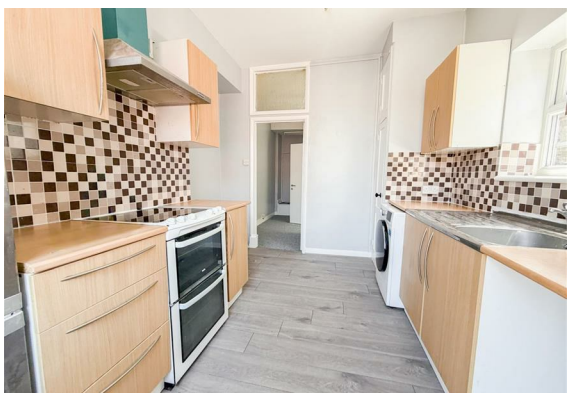
A newly improved split-level two/three bedroom flat in Seaside, Eastbourne, offering spacious and flexible accommodation with a private entrance.

The property is arranged over two floors, providing a practical separation between living and sleeping space. On the upper level are two well-proportioned bedrooms, offering a quiet and comfortable area ideal for rest. The lower level features an additional versatile room that can be used as a third bedroom, dining room, or second reception room depending on requirements.

The flat benefits from a generous overall layout, creating an open and airy feel throughout. The private entrance adds to the sense of independence and convenience, making the property feel more like a house than a typical flat.

This is a well-presented and adaptable rental home, suitable for tenants looking for space, flexibility, and practical living arrangements in a convenient location.

Please note:  
An annual household income of £34,500 per annum is required





### Living Room

11'1" x 13'5" (3.4 x 4.1)

### Kitchen

11'9" x 9'6" (3.6 x 2.9)

### Bathroom

4'3" x 6'2" (1.3 x 1.9)

### Bedroom Three/Reception

7'6" x 11'1" (2.3 x 3.4)

### Bedroom One

8'10" x 13'5" (2.7 x 4.1)

### Bedroom Two

7'6" x 10'2" (2.3 x 3.1)

Council Tax Band C - £2,359.37 per annum



## Floor Plan

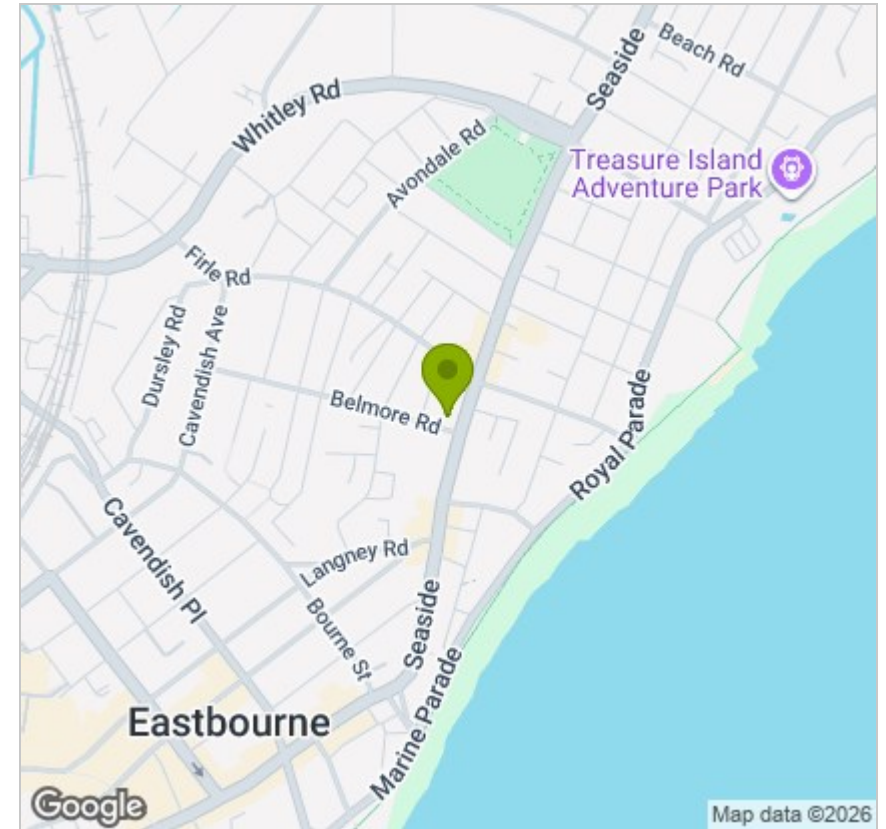


## Viewing

Please contact us on 01323 405553 if you wish to arrange a viewing appointment for this property or require further information.

These particulars, whilst believed to be accurate are set out as a general outline only for guidance and do not constitute any part of an offer or contract. Intending purchasers should not rely on them as statements of representation of fact, but must satisfy themselves by inspection or otherwise as to their accuracy. No person in this firm's employment has the authority to make or give any representation or warranty in respect of the property.

## Area Map



## Energy Efficiency Graph

